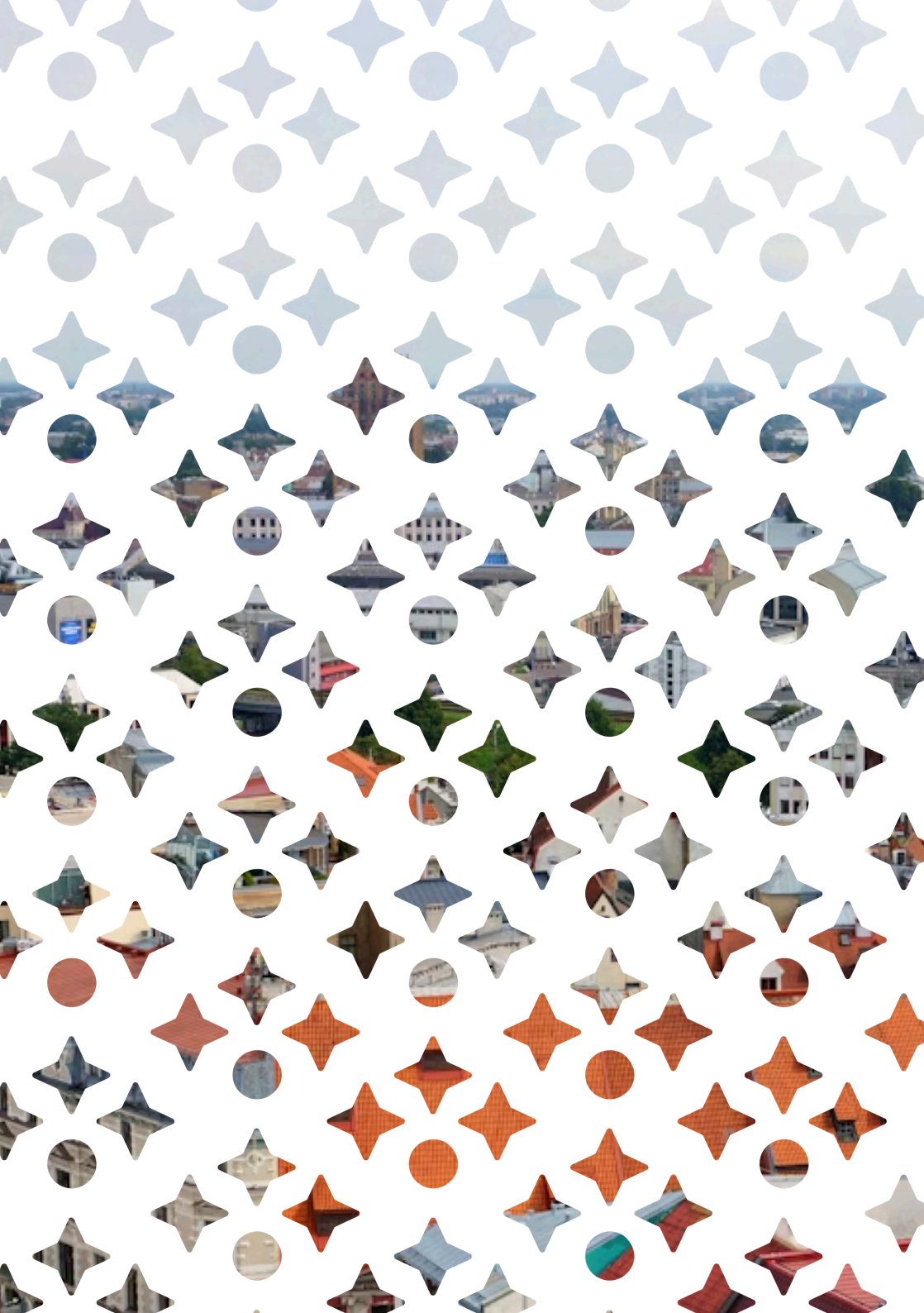
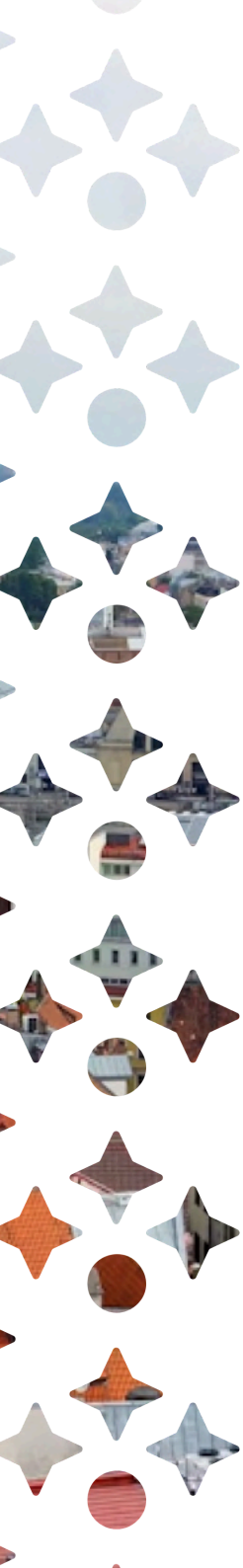


)LKA(**ACE²** : Applied
Connected
Entrepreneurial &
EUROPEAN UNIVERSITY ● Engaged

InfoPack
RĪGA



LATVIA



About Latvia

Population: Around 1,877 million people

Capital: Rīga – the largest city and cultural, political, and economic center

Official Language: Latvian (English is widely spoken by younger generations and in urban areas)

Currency: Euro (EUR)

Time Zone: Eastern European Time (EET) – UTC +2

Climate: Latvia has four distinct seasons:

- Cold winters (temperatures can drop below -10°C),
- Warm summers (average around $+20-25^{\circ}\text{C}$),
- Rainy autumns and blooming springs.

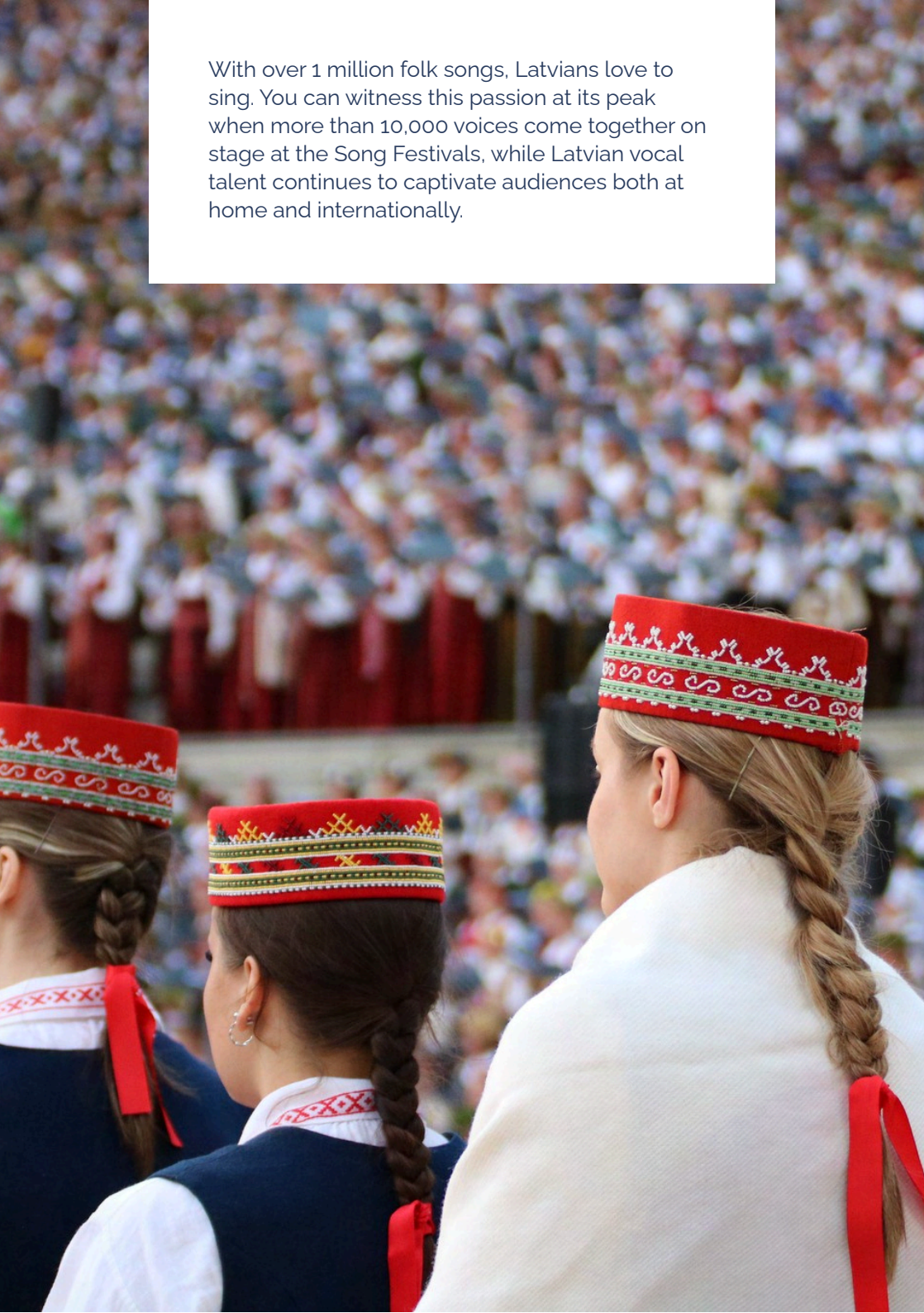
Welcome to Latvia!

Latvia is a land of diverse and enchanting landscapes, from Europe's widest waterfall to unspoiled forests and coastlines, and a place where the Song and Dance Festival and authentic folk traditions keep our heritage alive.

Latvia's coastline stretches over 500 km along the Baltic Sea, offering wide sandy beaches, pine forests, and peaceful seaside towns.



With over 1 million folk songs, Latvians love to sing. You can witness this passion at its peak when more than 10,000 voices come together on stage at the Song Festivals, while Latvian vocal talent continues to captivate audiences both at home and internationally.





Latvian patriotism is quiet but unwavering — rooted in nature, preserved in language, and carried through generations in song.

Great Ķemeri Bog



The cat from the animated film "Flow" in Riga's urban space

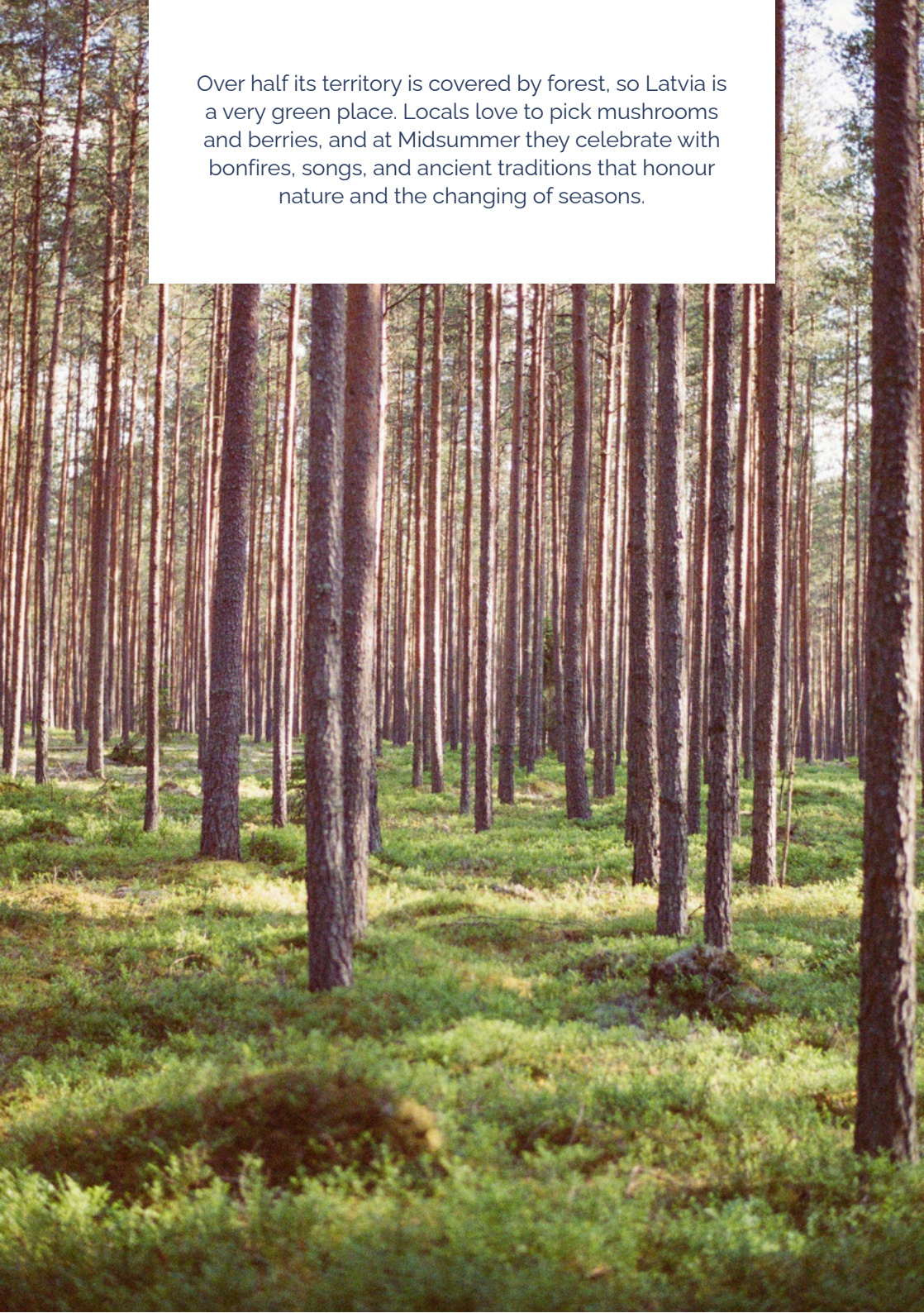


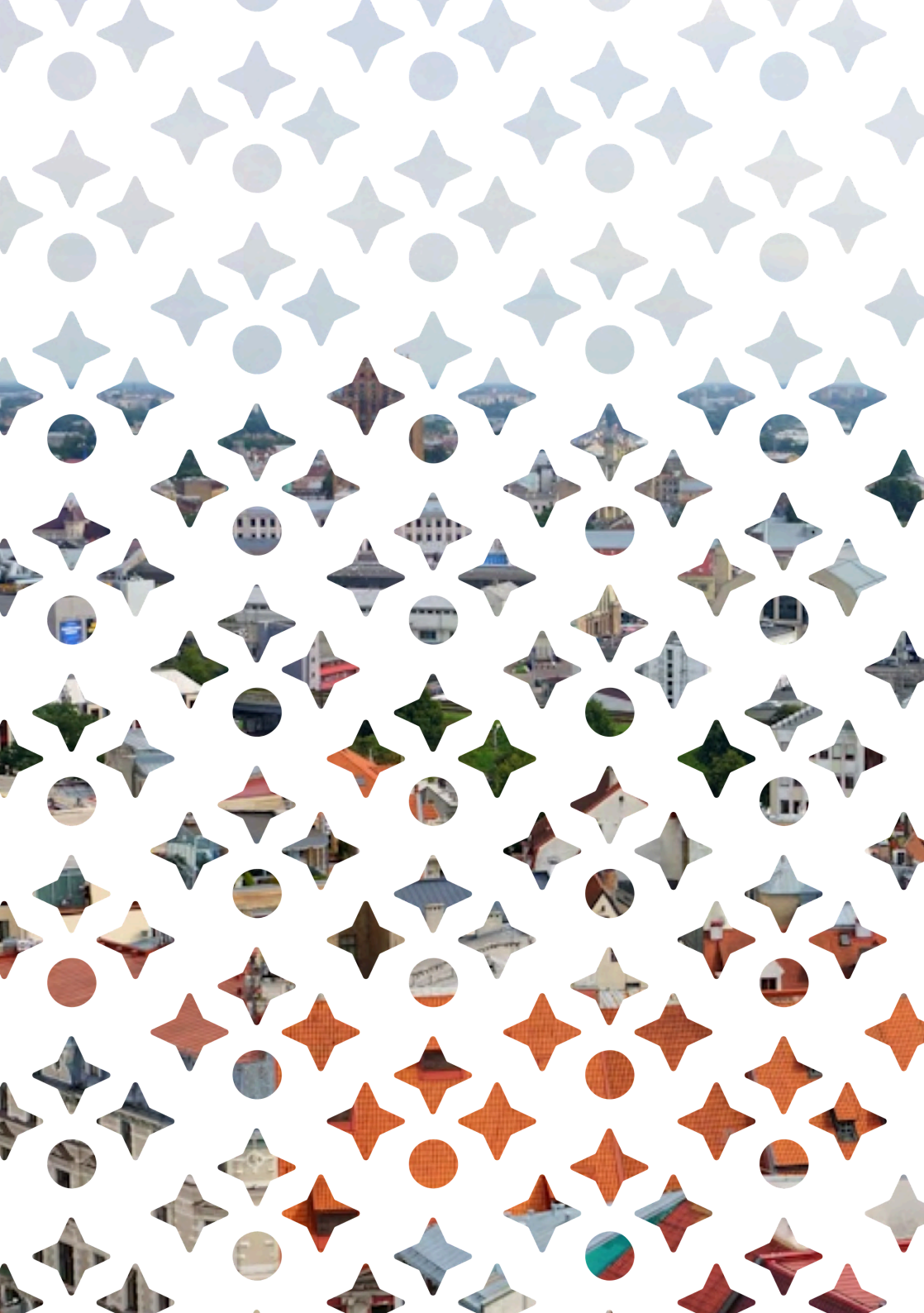
Latvian National Opera and Ballet



/07

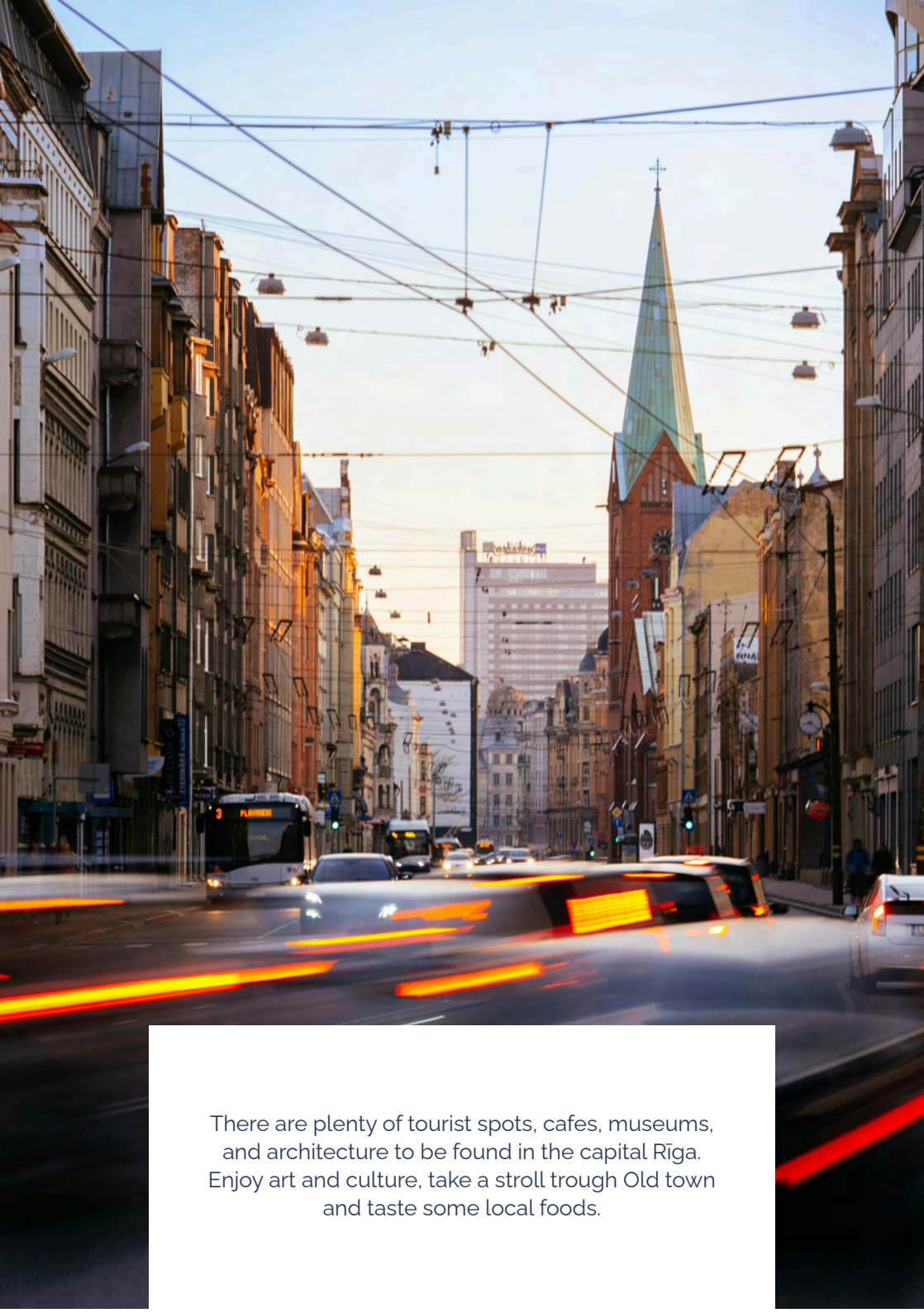
Over half its territory is covered by forest, so Latvia is a very green place. Locals love to pick mushrooms and berries, and at Midsummer they celebrate with bonfires, songs, and ancient traditions that honour nature and the changing of seasons.





RIGA





There are plenty of tourist spots, cafes, museums, and architecture to be found in the capital Riga. Enjoy art and culture, take a stroll through Old town and taste some local foods.

About Rīga

Population: Around 605 273 people

Vibe: A dynamic blend of history and modernity – cobblestone streets and Art Nouveau architecture meet creative industries, cafés, and a vibrant cultural life

Location: On the Baltic Sea coast, in central Latvia – about 300 km from Tallinn and 260 km from Vilnius.

Not to be missed in Rīga

Old Town (Vecrīga) – UNESCO World Heritage Site full of charm and character

Rīga Art Nouveau District – one of the richest collections in Europe

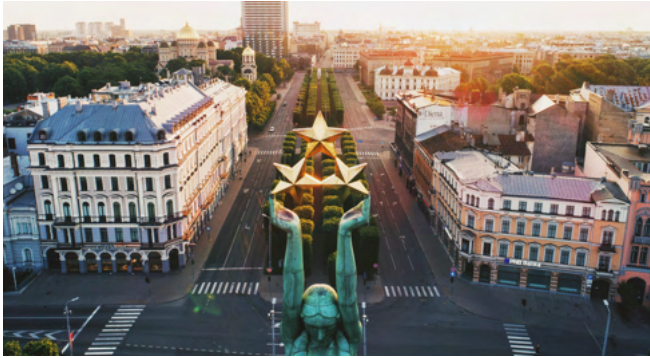
Latvian National Opera and Ballet – high-quality performances in a historic setting

Sunset stroll along the **Daugava River promenade** or across the Stone Bridge

Rīga Cathedral & St. Peter's Church – architectural highlights with panoramic views

Freedom Monument – symbol of Latvian independence and identity

Freedom Monument and Freedom Street



House of the Blackheads and St. Peter's Church – an iconic view of Old Riga

/13



Art Nouveau ornament – a gem of Riga's unique architecture



In Latvia, spring holds a brief moment of returning chill - locals often say it arrives when the bird cherries are in bloom.



Accommodation

in Rīga

Apart Hotel TOMO

Website: <http://www.tomo.lv/en/>

Contact information: sales@tomo.lv | 44 Raunas Street

Duck Republik

Website: <https://duckrepublik.eu/>

Contact information: support@duckrepublik.eu | 1 Lauvas Street

Blue Bird Hostel

Website: <https://www.booking.com/Share-iY4CSH>

Contact information: bluebirdriga@gmail.com | 4 Tirgoņu Street

Riga Apartment

Website: <https://rigaapartment.com/>

Contact information: reservation@rigaapartment.com |

22 Elizabetes Street

Other accommodation options:



Hotels:

METROPOLE by Semarah
Konventa Seta Hotel
Radisson Blu Latvija Conference & Spa Hotel
Radisson Blu Elizabete Hotel
Tribe Riga City Centre
Mercure Riga Centre
Radisson Hotel Old Town Riga
Wellton Centrum Hotel & SPA



Hotels:

Rija Domus Hotel
Elizabete Design Hotel
Old Riga Plaza Hotel
Ibis Riga Centre

Where to eat

in Rīga

Rīga offers a diverse food scene that blends traditional Latvian flavors with modern European cuisine — think hearty buckwheat dishes, grey peas with bacon, beetroot soup, fresh Baltic fish, rye bread, and berry desserts. You'll also find a growing number of vegan and vegetarian spots, especially around the city center and creative districts.

Affordable prices:

You can eat well for around 8.00–15.00 EUR.

Vegetarian/vegan options are widely available: look for "veģetārs" or "veģāns" on the menu.

Some places to try:

- **Lido Vērmanītis** – a popular self-service restaurant offering hearty Latvian food in a folkloric setting | 65 Elizabetes Street
- **Stockpot** – small, cozy, and beloved for spicy soups, curries, and many veggie/vegan options | 36 Krišjāņa Valdemāra Street
- **Mr. Fox** – healthy brunches, grain bowls, and artisan coffee 34A Dzirnavu Street
- **MiiT Coffee** – plant-based café with great coffee, crepes, and a creative vegan menu | 10 Lāčplēša Street
- **Folkklubs Ala Pagrabs** – underground tavern with live music and a wide selection of Latvian dishes and craft beers 19 Peldu Street



Grey peas with bacon

A refreshing summer soup made with beets, kefir, cucumbers, radishes, dill, and eggs — served cold and bright pink. Perfect for hot days!

Note: Latvians and Lithuanians are still in friendly disagreement over who can truly claim this soup as their national dish... so just enjoy it and don't take sides.



From the Airport to the City

Rīga (RIX)

You can get to and from the city center by public bus No. 22. Tickets (€1,50) can be purchased at the airport, at Narvesen kiosks, or electronically via the "Mobilly" app.

Learn more about ticket types and prices at: rigassatiksme.lv

/20

Taxi: we recommend using the Bolt app as the most affordable option. Download it here: bolt.eu



Getting Around

Rīga

Rīga has a reliable and affordable public transport system operated by Rīgas Satiksme, which includes trams, buses, and trolleybuses covering the entire city.

Tickets:

- Single ride: 1.50 EUR (valid for 90 minutes)
- 24-hour pass: 5.00 EUR
- 3-day pass: 8.00 EUR
- 5-day pass: 10.00 EUR

These tickets are valid for all public transport (trams, buses, trolleybuses). The ticket must be validated each time you enter a new vehicle!

You can buy tickets:

- At ticket machines (available in central areas and some stops)
- At Narvesen kiosks or Rimi supermarkets
- Online or via the Mobilly or Rīgas satiksme (RS) app

Recommended app:

Mobilly – buy tickets, check validity, and plan your route (available in English)

Google Maps – reliable for planning public transport trips in Rīga



Going Out in

Rīga

Alternative Nightlife Venues in Riga

Riga offers a vibrant alternative nightlife scene beyond the mainstream clubs and bars. From creative cultural hubs to industrial-style party spaces, the city has plenty to explore for those looking for something different. Below are some of the key venues that stand out as top spots for young people seeking unique atmospheres, live music, and authentic local vibes.

/23

Kaņepes Culture Centre | 15 Skolas Street

Culture, arts, concerts, open atmosphere, creative hub

Tallinas Street Quarter | 10 Tallinas Street

Industrial setting, street art, concerts, popup bars, summer courtyards

M/Darbnīca | 9 Aristida Briāna Street

Improvisation evenings, live music, DJ sets, alternative crowd

Aleponija | 8 Miera Street

Bohemian bar, jazz, indie, folk, cosy atmosphere

Vagonu HALL | 21 Vagonu Street

Techno, electronic music, warehouse vibes, all-night events

Kimmel Quarter | 93/95 Tērbatas Street

Concerts, open-air events, cultural activities, industrial architecture

Nemiers | Old Town, 18/20 Peldu Street

Rock, punk, alternative audience, live concerts, bar vibe

Going Out in

Rīga

Cultural Evenings

- **Latvian National Museum of Art** – classical and contemporary Latvian art
- **Rīga Circus** – revitalized cultural space for contemporary circus and performing arts
- **Museum of the Occupation of Latvia** – powerful insight into 20th-century history
- **Mežaparks** – forested park with a zoo and outdoor stage (venue for Song & Dance Festival)
- **Bastejkalns Park & Canal** – peaceful area in the heart of the city
- **Botanical Garden** – lush collection of plants and greenhouses

/24

One of the most popular entertainment spots for visiting students is the **traditional folk club “ALA,”** located in the old town part of Rīga. Here, you can experience Latvian folk and world music, traditional and modern Latvian cuisine, Latvian dance evenings, and concerts featuring both Latvian and world folk music. On Wednesday evenings, there is a chance to take part in the traditional folk dancing event. More information: <http://www.folkklubs.lv/home/>

Very close to the Latvian Academy of Culture, “Gara māja” is the **“Tallinnas Street Quarter,”** where creative industry enterprises, cultural venues, and art enthusiasts come together. A diverse program is offered to the public, including concerts, workshops, and art exhibitions. It's a place with affordable options for eating and drinking. More information: <https://www.tallinasielaskvartals.lv/>. More about events: <https://www.facebook.com/Tallinasielaskvartals/events>

- More information about Rīga and opportunities in the city can be found here: <https://www.liveriga.com/en//>
- More about city, culture and food from Rīga Urban Media can be found here: <https://neighborhood.lv/en/> or on Instagram: <https://www.instagram.com/riga.neighborhood/>

) LKA (LATVIAN
ACADEMY
OF CULTURE





Latvian Academy of Culture

Students: Around 1000

Staff: Around 100 academic and administrative staff and researchers

Programs: Short cycle (college), bachelor, master, doctoral, and lifelong learning for culture and creative industries professionals

Departments: 6 total

Established: 1990, serving as a hub for academic and cultural life

Discover the

LAC Campus

National Film School of the Latvian Academy of Culture

The National Film School of the Latvian Academy of Culture (NFS) is located in newly renovated premises at 58a Miera Street, Riga.

Mission and role

- To provide a contemporary study environment for future film and audiovisual professionals.
- To serve as a hub for collaboration between academia, the film industry, and creative businesses.
- To support students and teachers with the infrastructure needed for hands-on creative work.

Significance

The new home of the Film School strengthens the quality of education at the Latvian Academy of Culture and symbolises the transformation of Riga's industrial heritage into a vibrant centre for culture, education, and innovation.



/28



Discover the

LAC Campus

The “Gara māja” – Space for Research, the Alliance’s SPACE Centre, Master’s and Doctoral Studies

The “Gara māja” (“Long House” – also resonating with “Spirit House”) is one of the central buildings of the Latvian Academy of Culture Creative Quarter at 58a Miera Street.

/29

It accommodates the Institute of Arts and Cultural Studies, several Master’s and Doctoral programmes, and the SPACE Centre (Societal Partnerships and Cultural Engagement Centre) of the ACE²-EU Alliance. This building is a vibrant hub for research, international collaboration, and academic exchange, symbolising both its physical length and its role as a space of spirit, knowledge, and creativity.



Discover the

LAC Campus

The “Zirgu pasts” – Space for Theatre Studies, Performances, and Student Creativity Latvian Academy of Culture, 46 Dzirnavu Street, Rīga

The “Zirgu pasts” (“Horse Post Station”) is one of the most recognisable study and performance spaces of the Latvian Academy of Culture. Located in Riga's centre, it combines historical heritage with contemporary use, offering an inspiring environment for both academic work and artistic practice.

The building houses lecture halls and rehearsal rooms, while its black box theatre serves as a platform for student productions, experimental performances, and public cultural events. As a space for theatre studies and creative exploration, “Zirgu pasts” plays a vital role in shaping future professionals in the performing arts.



Transport to LAC

How to reach the Latvian Academy of Culture buildings from Riga Central Station

Starting point: Riga Central Station (Central Railway Station / “Centrālā stacija”)

To 58a Miera Street (LKA Creative Quarter – National Film School, “Gara māja”)

- By tram: Take tram No. 11 from stop “Centrālā stacija” (direction Mežaparks) → Get off at stop “Dzemdību nams” → Walk about 3 minutes to 58a Miera Street. Total travel time: ~20 minutes.
- By taxi/ride-hailing (Bolt/Bolt scooter): approx. 10 minutes.
- On foot: ~30 minutes through the city centre.

To 46 Dzirnavu Street (“Zirgu pasts” theatre and study building)

- On foot: The easiest way - about 10 minutes' walk from the Central Station via Marijas iela or Tērbatas iela.
- By public transport:
 - Several trolleybus and bus lines stop near Dzirnavu iela (e.g., stop “Barona iela”).
 - Travel time: ~5 minutes by transport + short walk.
- By taxi/ride-hailing: 5 minutes.

Say it in Latvian

Sveiki

Hello

Labrīt

Good morning

Labdien

Good afternoon

Labvakar / Ar labu nakti

Good evening / Good night

Lūdzu

Please

Atvainojiet / Piedodiet

Excuse me / Sorry

Kur ir...?

Where is...?

Cik tas maksā?

How much does it cost?

Autobusu stacija

Bus station

Centrs

Center (city center)

Veikals

Shop / Store

Aptieka

Pharmacy

Slimnīca

Hospital

Restorāns

Restaurant

Ēdienkarte

Menu

Paldies

Thank you

In Case of Emergency...

If you need urgent help or assistance during your stay in Riga, Latvia, here are some useful contacts:

Emergency Numbers

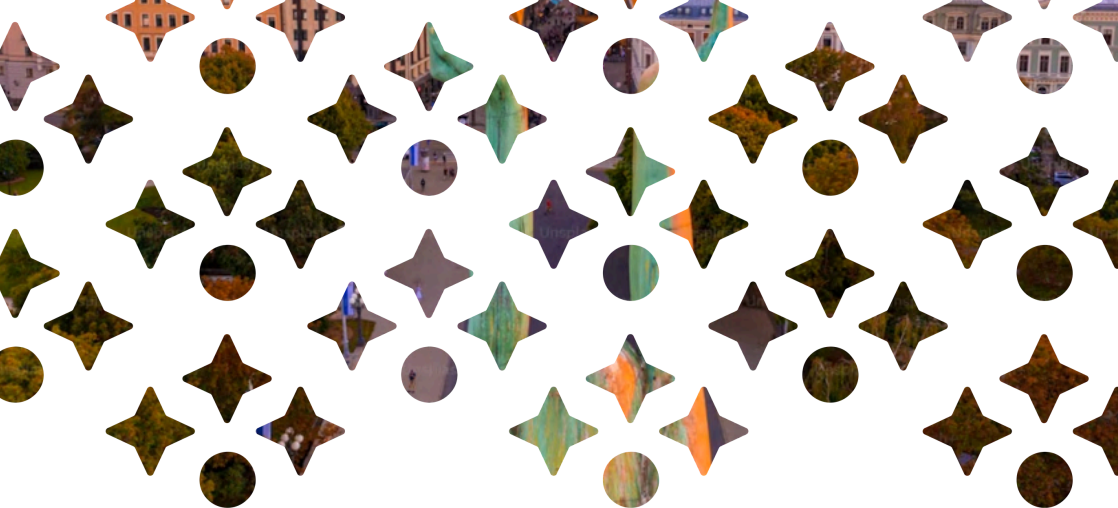
- General Emergency (Police, Fire, Ambulance): 112
Free, 24/7, available in English

Nearby Hospitals in Rīga

- Pauls Stradiņš Clinical University Hospital
+371 6707 0000, 13 Pilsoņu Street, Rīga
- Riga East Clinical University Hospital (Gaiļezers)
+371 6704 2000, 2 Hipokrāta Street, Rīga
- Children's Clinical University Hospital
+371 6706 6000, 45 Vienības gatve, Rīga

Latvian Academy of Culture Contacts

- Main Reception (LKA, 24 Ludzas Street):
+371 67114800 | lka@lka.edu.lv
- National Film School & Creative Quarter
58a Miera Street | +371 67114855
- "Zirgu pasts" Theatre House (46 Dzirnavu Street)
+371 67114850
- "Gara māja" | 58a Miera Street | +371 67140175



ACE² Applied Connected Entrepreneurial & EUROPEAN UNIVERSITY Engaged



SANTARÉM
POLYTECHNIC
UNIVERSITY
POLITÉCNICO DE SANTARÉM



Lietuvos
inžinerijos
kolegija



LATVIAN
ACADEMY
OF CULTURE



GOCE DELCEV
UNIVERSITY



MEDICAL
UNIVERSITY
OF GDAŃSK



KÄRNTEN
University of
Applied Sciences



Universidad
Francisco de
Vitoria



Technische Hochschule
Ingolstadt



Co-funded by
the European Union

Funded by the European Union. Views and opinions expressed are however those of the author(s) only and do not necessarily reflect those of the European Union or European Education and Culture Executive Agency (EACEA). Neither the European Union nor the granting authority can be held responsible for them. Project 101377595.