



ACE² Applied
Connected
Entrepreneurial &
EUROPEAN UNIVERSITY Engaged

 Co-funded by
the European Union



InfoPack
TÂRGU JIU



ACE² : Applied
Connected
Entrepreneurial &
Engaged
EUROPEAN UNIVERSITY

 Co-funded by
the European Union



ROMÂNIA



About Romania

Population: Around 19 million people

Capital: Bucharest

Language: Romanian

Currency: Romanian Leu

Weather: Romania experiences four distinct seasons.

Tip: Romanian weather can change quickly, so versatile clothing is your best friend.

Time Zone: Eastern European Time (EET)

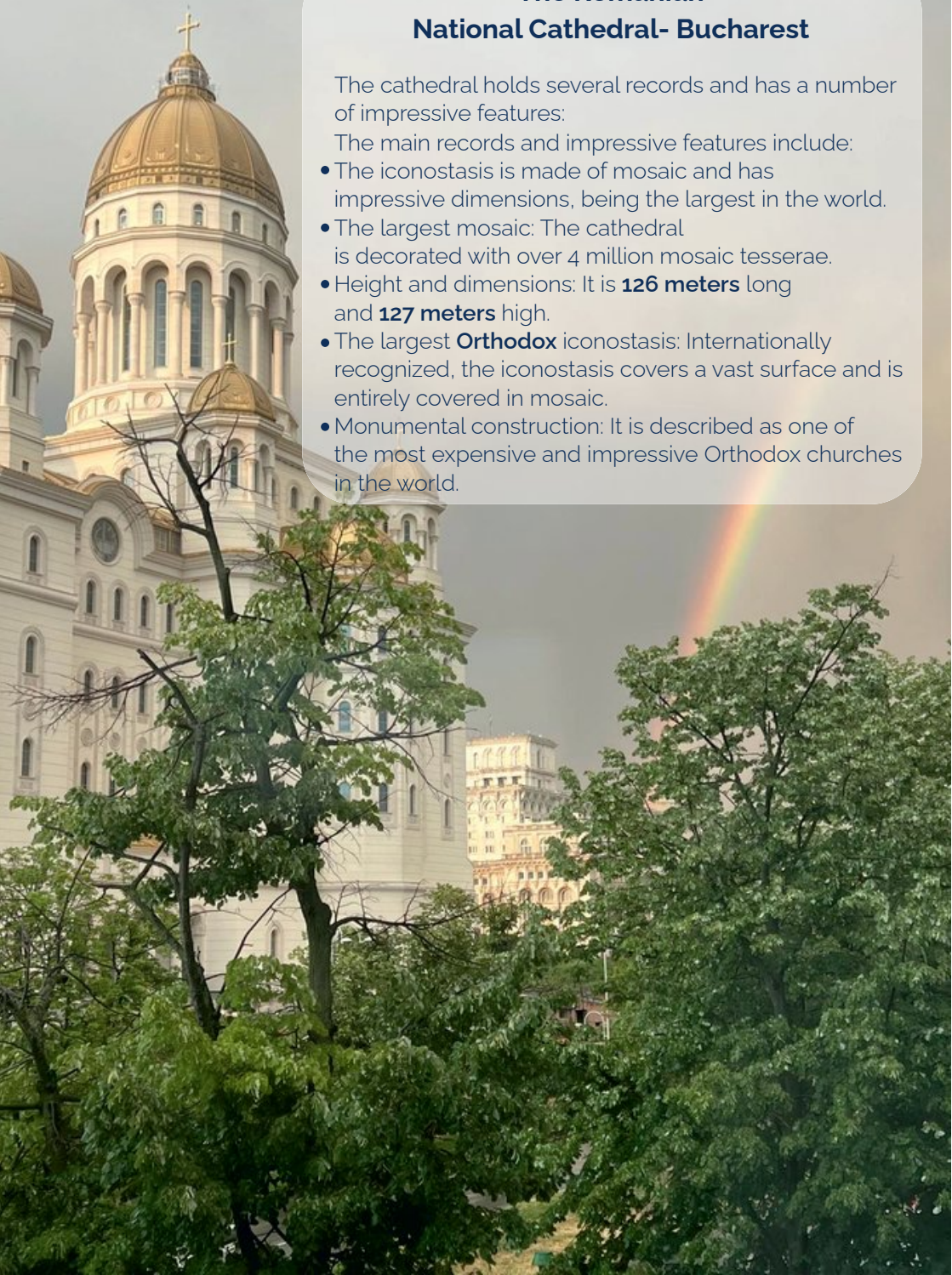


The Romanian National Cathedral- Bucharest

The cathedral holds several records and has a number of impressive features:

The main records and impressive features include:

- The iconostasis is made of mosaic and has impressive dimensions, being the largest in the world.
- The largest mosaic: The cathedral is decorated with over 4 million mosaic tesserae.
- Height and dimensions: It is **126 meters** long and **127 meters** high.
- The largest **Orthodox** iconostasis: Internationally recognized, the iconostasis covers a vast surface and is entirely covered in mosaic.
- Monumental construction: It is described as one of the most expensive and impressive Orthodox churches in the world.



The Danube Delta

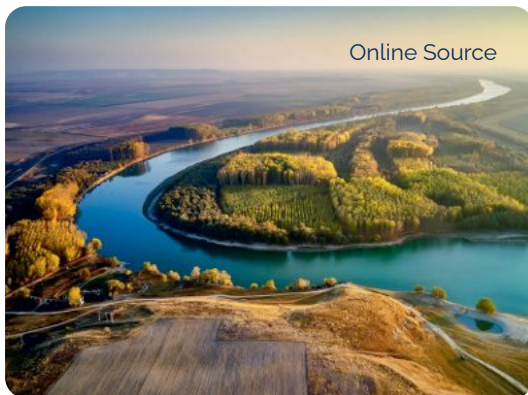
The **Danube Delta** is the best-preserved delta in **Europe** and the second largest on the continent.

Listed as a **UNESCO World Heritage Site since 1990**, it represents **Romania's** youngest land, a wetland of incredible biodiversity.

Formation: The Danube flows into the **Black Sea** through three main branches: **Chilia** (the longest), **Sulina** and **Sfântu Gheorghe**.

Biodiversity: Hosts over **300** species of birds and a rich vegetation dominated by reeds, rushes and willows.

Area: Approximately 4,178 km², including the Razim-Sinoe lagoon complex.



The Black Sea

The **Black Sea** is an intercontinental sea located between **Europe** and **Asia**, being a component of the **Atlantic** basin connected to the **Mediterranean Sea** through the **Bosphorus** and **Dardanelles** straits.

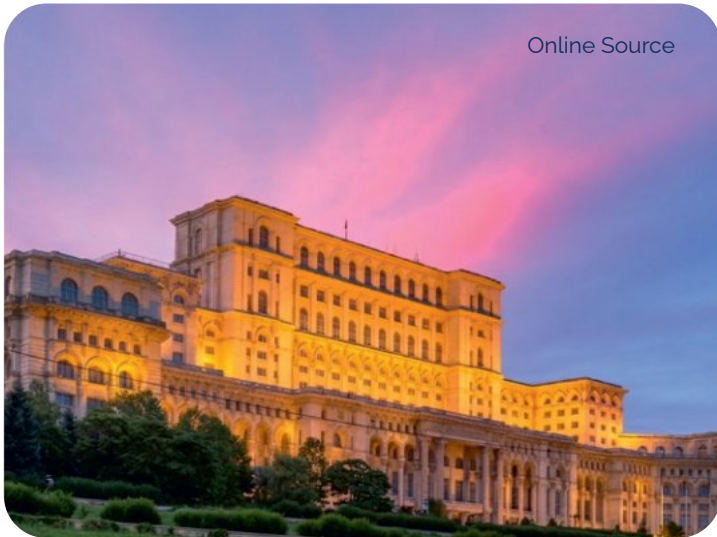
Riparian states: Romania, Bulgaria, Turkey, Georgia, Russia and Ukraine.

Dimensions: It has a maximum depth of **2,258** meters and an average depth of approximately **1,271** meters.

Romanian coastline: It stretches for **245** km, in the southeastern part of the country.

Major tributaries: The most important rivers that flow into the Black Sea are the Danube, the Dniester, the Dnieper, the Bug and the Kuban.

Romanian Parliament



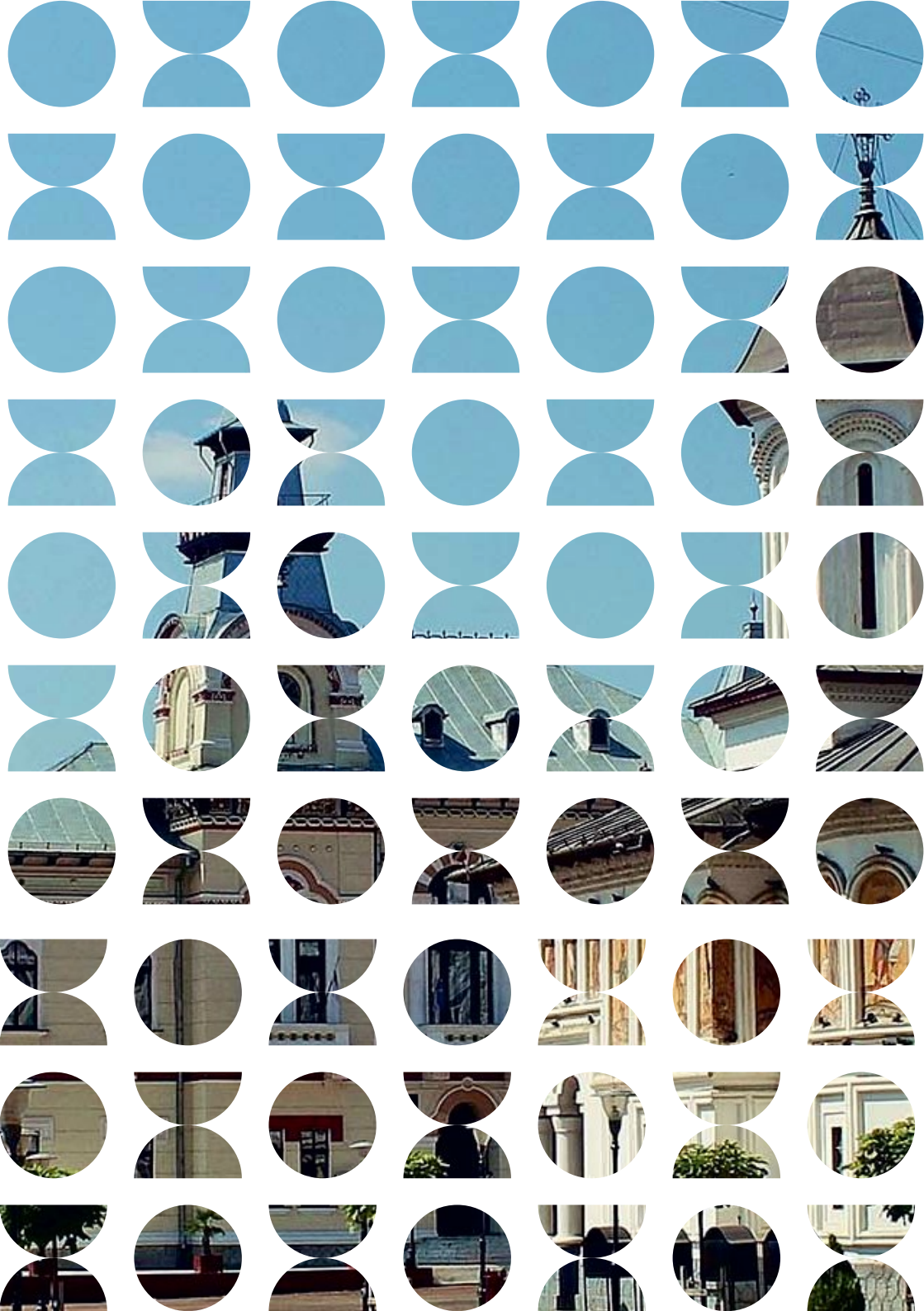
The **Palace of the Parliament in Bucharest**, also known as the **People's House**, holds three officially recognized world records certified by the **World Records Academy**: The largest administrative building in the world (by surface area, approx. **365,000 sqm**).

The heaviest building in the world (approx. 4.1 million tons).

The third largest building by volume (2.55 million cubic meters).

Key details about the construction: Construction: It was built during the communist period, using exclusively Romanian materials (marble, steel, crystal).

Dimensions: The second-largest administrative building by surface area after the **Pentagon**. Effort: It required the work of over **20,000** people who worked in shifts for seven years.





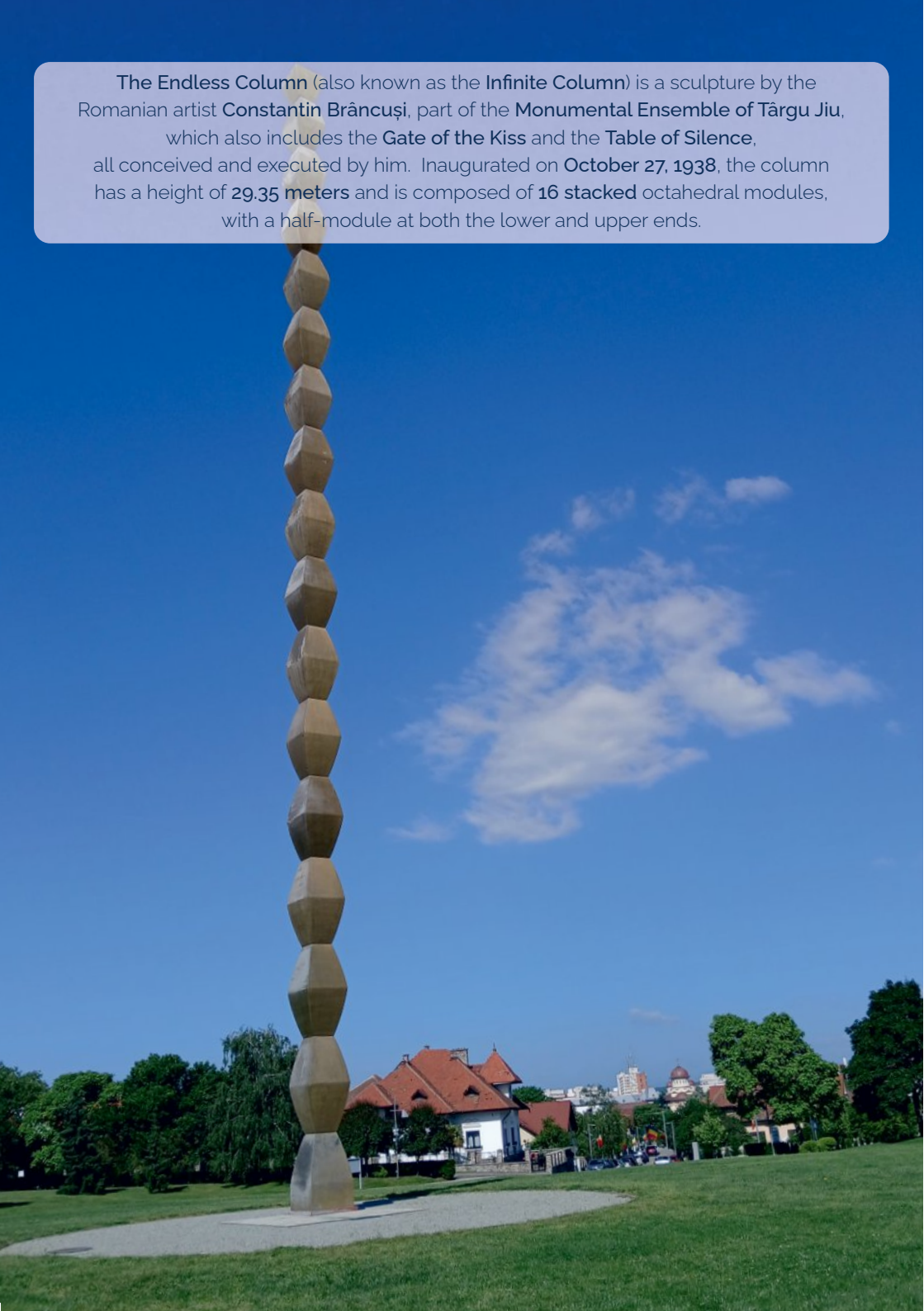
ACE² : Applied
Connected
Entrepreneurial &
Engaged
EUROPEAN UNIVERSITY

 Co-funded by
the European Union

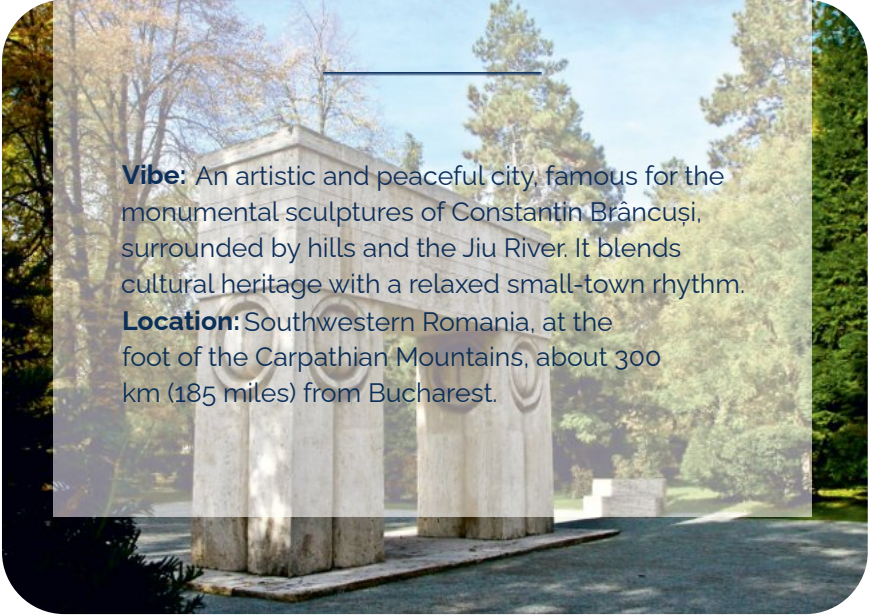


TÂRĞU JIU

The **Endless Column** (also known as the **Infinite Column**) is a sculpture by the Romanian artist **Constantin Brâncuși**, part of the **Monumental Ensemble of Târgu Jiu**, which also includes the **Gate of the Kiss** and the **Table of Silence**, all conceived and executed by him. Inaugurated on **October 27, 1938**, the column has a height of **29.35 meters** and is composed of **16 stacked** octahedral modules, with a half-module at both the lower and upper ends.



About Târgu Jiu



Vibe: An artistic and peaceful city, famous for the monumental sculptures of Constantin Brâncuși, surrounded by hills and the Jiu River. It blends cultural heritage with a relaxed small-town rhythm.

Location: Southwestern Romania, at the foot of the Carpathian Mountains, about 300 km (185 miles) from Bucharest.



Not to be missed in Târgu Jiu:

Population: Around 90,000 inhabitants

- The Endless Column (Coloana Infinitului).
- The Gate of the Kiss (Poarta Sărutului).
- The Table of Silence (Masa Tăcerii).
- The Alley of Chairs (Aleea Scaunelor).
- The Jiu River Promenade (Promenada râului Jiu).



Infopack - Târgu Jiu



About Târgu Jiu

Accommodation

in Târgu Jiu

There are plenty of options in Târgu Jiu, including hotels, guesthouses, apartments, and budget hostels. Prices and availability vary depending on the season and local events (especially during festivals or cultural celebrations), so it's best to search on platforms like Booking.com or Airbnb for the most up-to-date offers.

Some options to consider:

Mid-range & boutique hotels;

Local Airbnb & short-term rentals;

Budget hostels.



4-Star Hotels

Hotel Ramada by Wyndham Târgu Jiu –

Elegant hotel with a spa, pool, and excellent restaurant- starting from **455 lei/night**.
ramadatargujiu.ro



3-Star Hotels

Hotel Anna & Anna Junior

Located close to the city center
-starting from **315 lei/night**.

hotelanna.ro



About Târgu Jiu

Hotel Europa –

Great for business or leisure stays

- starting from **290** lei/night.

hotelrestauranteuropa.ro



Parang Guesthouse

Brancusi's art meets refinement

- starting from **436** lei/night.

pensiuneaaparang.ro



Antique Guesthouse - from **280** lei/night.

pensiuneaantique.ro

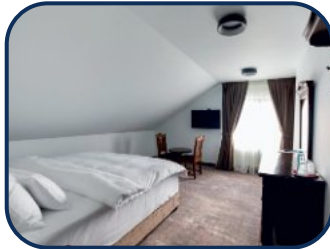




Casa Vera Guesthouse

Pleasant and relaxing atmosphere
- starting from **220** lei/night.

pensiuneacasavera.ro



Infinity Guesthouse

The perspective of excellence
- starting from **290** lei/night.

pensiuneainfinity.ro





The **Table of Silence**, carved from **Banpotoc stone**, represents the table before the confrontation in the battle in which the fighters are about to take part. Time is present, symbolized by the circular arrangement of the 12 hourglass-shaped seats that measure it.

From the airport to Târgu Jiu

Airport Transfers

- By car: Rent a car at Bucharest Airport and drive to Târgu Jiu.

Route: A1 (Bucharest→Pitești), DN67 (Râmnicu Vâlcea→Târgu Jiu).

Route: A1 (Bucharest→Craiova→Târgu Jiu).

~4.5–5 hours

Do you need a transfer to Târgu Jiu?

You can access this link:

<https://www.bbilantravel.ro/index-2/>

Booking train tickets

The train is the most reliable way to reach Târgu Jiu from Bucharest or Craiova.

cfrcalatori.ro

Booking bus tickets

Buses are often faster than trains, especially from Bucharest.

autogari.ro

If you need help, please contact us at
0040762416453

From the airport to Târgu Jiu

Main Airport:

Bucharest Henri Coandă International Airport (OTP) –
~300 km distance to the final destination city Târgu Jiu

- Direct flights from most major European capitals.

Recommended Arrival:

- Most visitors fly to Bucharest Henri Coandă Airport (OTP) and continue to Târgu Jiu.

Second Airport:



- International Airport Craiova (CRA)
- 120 km distance to the final destination city
Târgu Jiu -closer but limited routes.



Airport Transfers

- Train: Take the train from "Henri Coandă Airport" to Bucharest Gara de Nord (main station).
~20 minutes (5–6 lei)
Then take a direct train from Bucharest Gara de Nord → Târgu Jiu.
~5–6 hours (110–140 lei)
- Bus: Line 210 From Bucharest airport, first go to Autogara Militari or Autogara Filaret (by taxi or Bolt, ~40–50 minutes). Then take a bus or minibus to Târgu Jiu.
~5 hours (80–100 lei)

Inside

Târgu Jiu

By train*

Târgu Jiu has a central railway station, mainly used for regional and national routes (not local transport).

By bus*

The city is served by Transloc, which operates buses and minibuses (microbuze) that connect all major districts.

- Frequency: every 10–20 minutes, depending on the line and time of day.

- Coverage: City Center, Parcul Central, 9 Mai, Debarcader, and University area.
- Tickets: around 3–4 lei (€0.60–0.80) per ride.

Tickets available:

From kiosks near bus stops;

Directly from the driver (exact change);

Or via the 24Pay mobile app (available in English).

Going Out in

Târgu Jiu

Cultural Evenings*

- Elvira Godeanu Theater - Modern performances
<https://teatrulelviragodeanu.ro/>
- Symphony Orchestra "Lyra Gorjului" Musical Society
– Classical concerts and occasional ballet performances.
<https://lyragorjului.ro/>

Day Trips from Târgu Jiu*

- Rânca Ski & Mountain Resort – Outdoor activities, hiking, and winter sports (~2h by car).
- Tismana Monastery – Historic monastery set in beautiful natural surroundings (~1h drive).
- Parâng Mountains – Hiking, nature, and scenic viewpoints (~1.5–2h by car).
- Sohodol Gorges.
- Women's Cave (Baia de Fier).

Where to eat

in Târgu Jiu

Lots of local restaurants serve traditional Romanian food — grilled meat, stews (tocăniță), polenta (mămăligă), and delicious Romanian doughnuts with sour cream and jam (papanashi).

Affordable prices: you can eat very well for around €10–15 per person (including a main dish, dessert, and a drink).

Vegetarian and vegan options are widely available, particularly in newer cafés and international restaurants—simply ask for mâncare vegetariană or fără carne.

Main Cafeteria (Cantina Central) UCB

- Affordable menus with hot meals, snacks, and daily specials.
- Salads, sandwiches, coffee, and pastries available daily.
- Outdoor terrace seating for sunny days.

Some options to consider:

City center

Restaurant Infinity
restaurantinfinity.ro

Restaurant Casa Vera
pensiuneacasavera.ro

Restaurant Ambassador
ambasadorelite.ro

Near the University

Gorjeanul Atrium

City Bar & Jospser Grill
citybar.ro

Restaurant Anna
superbistro.ro

Our favourite: COZONAC

Ingredients:

- flour,
- Eggs,
- Milk and dairy products (butter, milk, cream),
- Nuts (walnuts, hazelnuts, almonds),
- Soy (from lecithin or margarine).



Also ... PAPANAȘI

Ingredients:

- Cottage cheese (curd cheese),
- Eggs,
- Sugar & vanilla sugar,
- Lemon zest,
- Flour & baking powder,
- A pinch of salt,
- Oil for frying.

We love having barbecues outdoors, no matter the season.



Inside

Târgu Jiu

By car*

Driving is possible but not recommended in the city center, where traffic and parking can be limited, especially near Brâncuși Park.

- Parking: Paid and free areas available around central boulevards.
- Car rentals: Available in Bucharest Airport and some local agencies in Târgu Jiu.

Alternatives: Taxis, Bolt, and Uber are inexpensive and widely available.

Taxi, Bolt & Uber*

Quick and convenient for short distances.
Typical ride: 5–10 minutes anywhere in town.
Average fare: 10–15 RON (€2–3).
Apps: Bolt and Uber work well in Târgu Jiu.

Going Out in

Târgu Jiu

Nightclubs & Dancing*

- Club Pogany – Nightclub for dancing and DJ.
- Club Uzina - Nightclub for dancing and DJ.
- Restaurant Ambassador- live bands, craft beer.
- Restaurant Infiniti - craft beer, drinks, food.
- Restaurant Keop`s - craft beer, drinks, food.
- Restaurant Tower`s - craft beer, drinks, food.
- Brasere La Factory - craft beer, drinks, food.

Infopack- Târgu Jiu



How You Can Pay in Romania?

Card Payments (VERY COMMON):

- Visa & Mastercard accepted almost everywhere;
- Contactless payments (tap-to-pay) are standard;
- Apple Pay / Google Pay also widely used.

Cash Payments (STILL IMPORTANT)!

Cash is still needed in some situations:

- Small shops or kiosks;
- Local markets;
- Some taxis;
- Rural areas / trips outside city.

Recommendation: Always carry 100-200 Lei in cash.

CONNECTIVITY & MOBILE ACCESS

Staying connected in Romania is easy and affordable.

Mobile Network Coverage

Romania has excellent mobile coverage, including 4G and 5G in most urban areas and along main roads.

Main providers:

- Orange,
- Vodafone,
- Digi.

Roaming (VERY IMPORTANT)!

You can buy prepaid SIM cards, at the airport (Bucharest or Craiova).

Typical cost: €5 - €10 and includes generous mobile data (often 50-100 GB).

You may need: Passport or ID for registration.

ESSENTIAL PRACTICAL INFORMATION

ATMs & Cash Withdrawal

ATM's are widely available in cities.
You can withdraw cash in Lei.

Electricity & Charging:

Plug types: C / F (European standard);
Voltage: 230V / 50Hz.



Bring an adapter if needed.

WEATHER in Gorj/Romania

Summer (June - August) 30° - 35° C

- Hot days.
- Unstable weather phenomena are common in the afternoon.

Spring (March-May) 20° - 25° C

- Cool mornings and evenings.
- Possible rain.

Autumn (September-November)

15° - 32° C

- Warm days, cold nights.
- Possible rain.

Winter (Decembrie-February) -10° - 5° C

- Snow, frosty periods.
- Possible ice.

THINGS TO DO IN TÂRGU JIU

Brâncuși Sculptural Ensemble (UNESCO)

This is the main attraction of the city and a must-see for every visitor.



Located in and around Central Park, the ensemble includes:

- The Endless Column – a symbol of infinity and sacrifice;
- The Gate of the Kiss – representing love and unity;
- The Table of Silence – symbolizing reflection and time.
- Heros Path

Tip: The three works are aligned along a walking axis you can explore them easily.



You can visit **Polovragi Monastery**, dedicated to the Dormition of the Mother of God, an architectural monument from the 17th century.



The **Polovragi** monastery complex is located at the foot of the **Piatra Polovragi** mountain near the Olteț Gorges, on the edge of the Polovragi village.



<https://comunapolovragi.ro/>

You can spend a few hours at **200 meters** above the ground, in **Baia de Fier** (about **40 km** from **Târgu Jiu**).

SCAN
ME



Students: Around 3,760
Staff: Around 139 staff
Faculty of Educational Sciences, Law and Public Administration;
Faculty of Economic Sciences;
Faculty of Engineering;
Faculty of Medical and Behavioural Sciences.



Scan & find Gorj

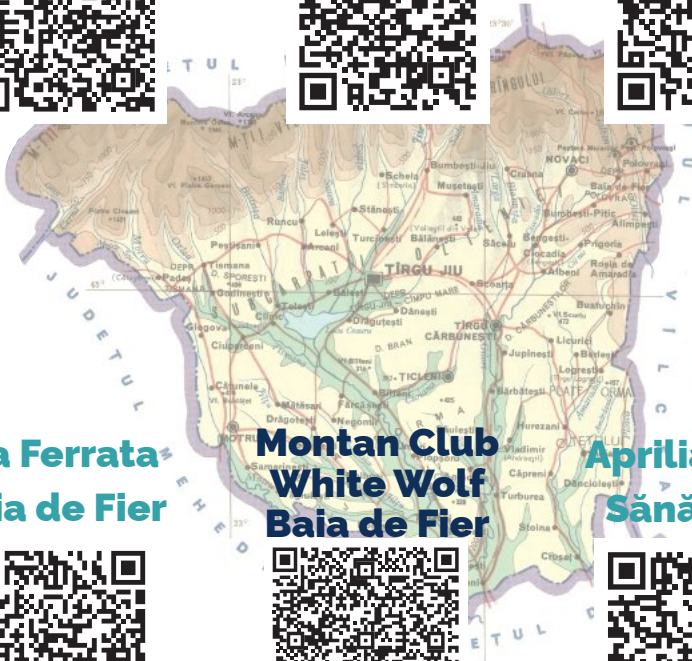
**Salvamont
Gorj-Rânca**



**Parc Aventura
Rânca**



**White-Wolf
club**



**Via Ferrata
Baia de Fier**



**Montan Club
White Wolf
Baia de Fier**



**Aprilia Park
Sănătești**





About **50 km** from **Târgu Jiu**, you can find **Rânca**,
Located at **1600 m** altitude on the **Transalpina (DN67C)**,
it is a superb summer destination, offering spectacular alpine
landscapes, hiking (Pâpuşa Peak, glacial lakes).





У
ОПРАВОДАНО
ПРИНЦИПІ
ПРОЦЕСУ

У
ІНСТІТУТ
НАДАННЯ
СЛУЖБИ

У
НАДАННЯ
СЛУЖБИ

UNIVERSITATEA



Say it in Romanian

Bună	Hello
Bună dimineața	Good morning
Bună ziua	Good afternoon
Noapte bună	Good evening / Good night
Buna seara	Good evening
Noapte bună	Good night
Vă rog	Please
Mulțumesc	Thank you
Scuzați-mă / Îmi pare rău	Excuse me / Sorry
Unde este...?	Where is...?
Cât costă?	How much does it cost?
Stație de autobuz	Bus station
Centru	Center (city center)
Magazin	Shop / Store
Farmacie	Pharmacy
Spital	Hospital
Restaurant	Restaurant
Meniu	Menu
Mulțumesc foarte mult	Thank you (formal)

In Case of Emergency...

If you need urgent help or assistance during your stay in Târgu Jiu, here are some useful contacts:

Emergency Numbers

- General Emergency (Police, Fire, Ambulance): 112 (Free, available 24/7, multilingual support).
- SMURD Gorj (Mobile Emergency Service for Resuscitation and Extrication): +40 253-211212.

Hospitals in Târgu Jiu

- County Emergency Hospital Târgu Jiu (Spitalul Județean de Urgență Târgu Jiu)

Address: Strada Progresului Nr. 18, Târgu Jiu, Gorj.

Phone: +40 253 242-515

Email: office@spitalgorj.ro

- MedLife Medical Center Târgu Jiu

Address: Strada Victoriei Nr. 118, Târgu Jiu 210191.

Phone: +40 257 960

UCB Contacts

- Drăgan Corina : 0040762416453 (24/7)
- International Relations Office – international@utgjiiu.ro
- UCB Medical Services – Located on campus (for minor medical assistance during school hours).



ACE² Applied Connected Entrepreneurial & EUROPEAN UNIVERSITY Engaged



Funded by the European Union. Views and opinions expressed are however those of the author(s) only and do not necessarily reflect those of the European Union or European Education and Culture Executive Agency (EACEA). Neither the European Union nor the granting authority can be held responsible for them. Project 101177596.